

KELLYS "KOOL" TRIPS

HALF DAY TRIPPERS - CAMDEN HAVEN FEBRUARY, MARCH, APRIL MAY 2019

Mondays are Morning Tea Half Day Trips - Wednesdays are expression of interest

Pick Ups from 8:30am/Return home by 12:30pm

Group Bus Cost: \$7.50 per person - non subsidised are from \$15 per person
 -refer back page

Morning Tea or other costs are at your own expense

DAY	DATE	WHERE TO
-----	------	----------

FEBRUARY HALF DAY TRIPPERS

MONDAY	11 Feb	Bonny Hills Nursery, BONNY HILLS
MONDAY	18 Feb	Aussie Outback Cafe, WAUCHOPE
MONDAY	25 Feb	Easy Walking Group, PORT MACQUARIE
WEDNESDAY	20 Feb	Bunnings, PORT MACQUARIE



MARCH HALF DAY TRIPPERS

MONDAY	11 March	Op Shops, PORT MACQUARIE
MONDAY	18 March	Easy Walking Group, PORT MACQUARIE
MONDAY	25 March	KMART, PORT MACQUARIE
WEDNESDAY	20 March	Visit to Glasshouse, PORT MACQUARIE

APRIL HALF DAY TRIPPERS

MONDAY	15 April	Billabong Zoo Cafe, PORT MACQUARIE
MONDAY	22 April	Abundance Nursery Cafe, SANCROX
MONDAY	29 April	Easy Walking Group, PORT MACQUARIE
WEDNESDAY	24 April	Water Tour Trail, PORT MACQUARIE

MAY HALF DAY TRIPPERS

MONDAY	13 May	Miss Nellies Cafe, KENDALL
MONDAY	20 May	Shopping to WAUCHOPE
MONDAY	27 May	Sandbar Cafe, NORTH HAVEN
WEDNESDAY	22 May	Ruins Tour, LAKE INNES



Outings are subject to change at short notice

A warm greeting to you All,

Hastings Macleay community Transport is committed to your wellness and want to see you enjoying life with opportunities that ensure this happens as an everyday routine. Join us on any one, two or more Full-Day or Half-Day Outings, no need to stay at home. You also get to meet the friendly Drivers, Carers and Staff.

Can I book a friend or family member to come with me?

Yes. This person is not a subsidised customer of Community Transport and the cost would be –

\$15.00 per person HALF-DAY TRIP

\$25.00 per person FULL-DAY TRIP - Refer Out & About Trips & Events Brochure

Please phone 6583 8644 for more information on eligibility and how to register for community transport. Your friend must be booked and please advise if they have a mobility aid.

Will any of the walking be too hard for my fitness levels? Can I bring my walker?

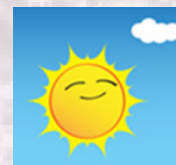
This will definitely not be too hard for you, it is all flat walking and you will walk at your own pace (walkers & walking sticks perfectly ok) and be able to have a chat whilst doing so. An opportunity to work up an appetite for a cuppa after!

Yes, we accommodate wheelie walkers and limited shopping bags.

Please advise at time of booking if you have a mobility aid.



Happy Walkers
enjoying the
morning in the
sun



BOOKINGS ESSENTIAL – Book early!

Phone Community Transport 65838644



Like us on
Facebook